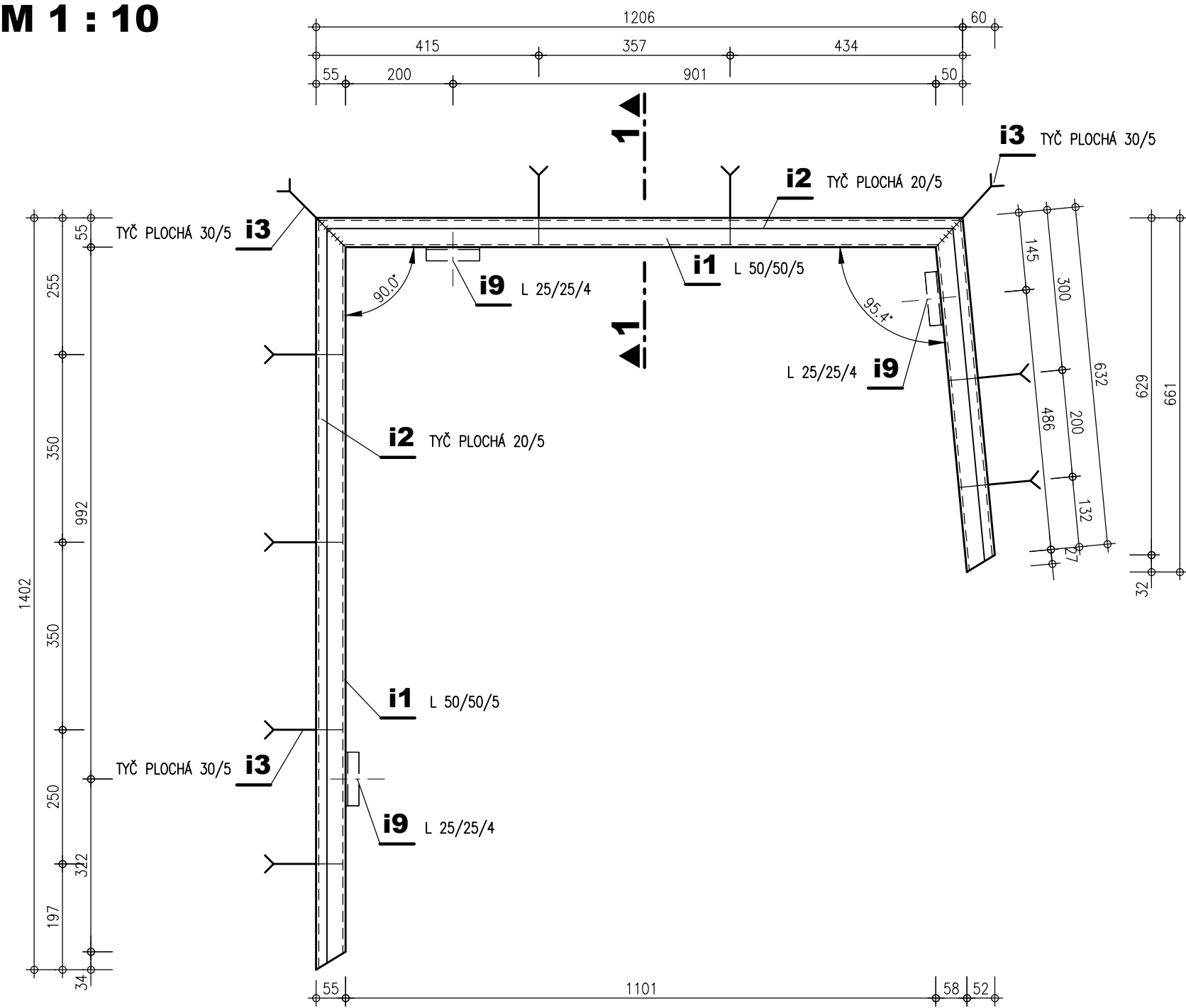


RÁM VÝKLENKU

M 1 : 10



Technical drawing of a rectangular plate with dimensions and mounting details. The drawing includes a top view and a side view.

Top View Dimensions:

- Overall width: 1217
- Overall height: 1362
- Top edge offsets: 100, 230, 928, 59
- Bottom edge offsets: 85, 132
- Internal width dimension: 986

Side View Dimensions:

- Overall width: 1362
- Overall height: 744
- Left edge offsets: 85, 290, 937, 546
- Right edge offsets: 293, 130, 488, 618
- Internal width dimension: 986

Mounting Details:

- OTVOR PRO UCHOPENI:** Three circular holes for clamping are indicated.
- i4:** A cross-hatched area indicating a specific material or reinforcement.
- i7:** A circular hole with a cross-hatched area, labeled **ČEP** (plug).
- i8:** A circular hole with a cross-hatched area, labeled **VÍKO ČEPU** (plug cap).
- Angles:**
 - 90.0° at the top-left corner.
 - 95.3° at the top-right corner.
 - 116.0° at the bottom-right corner.
 - 58.6° at the bottom-left corner.

Technical drawing of a window frame cross-section. The drawing shows a window frame with a central pane and side panels. Dimensions are given in millimeters. Key components and dimensions include:

- Dimensions:**
 - Overall width: 85
 - Distance from left edge to center of pane: 45
 - Distance from center of pane to right edge: 40
 - Distance from left edge to center of side panel: 10
 - Distance from center of side panel to right edge: 16
 - Distance from center of pane to center of side panel: 50
 - Distance from center of pane to center of side panel (inner): 31
 - Distance from center of pane to center of side panel (outer): 16
 - Distance from center of pane to center of side panel (inner): 10
 - Distance from center of pane to center of side panel (outer): 16
 - Distance from center of pane to center of side panel (inner): 10
 - Distance from center of pane to center of side panel (outer): 16
 - Distance from center of pane to center of side panel (inner): 10
 - Distance from center of pane to center of side panel (outer): 16
- Components:**
 - i1:** L 50/50/5
 - i9:** L 25/25/4
 - i7:** ČEP
 - i8:** VIKO ČEPU
- Other:**
 - 4 (indicated by arrows pointing to the top and bottom edges of the frame)


OC. TYČ PLOCHÁ TL. 5 mm
MĚŘÍTKO 1:2


Pol.	Druh materiálu mm	Délka m/m2	Ks	Hmotnost kg		
				1m (m2)	1ks	Celkem
i1	L50x50x5	3.240	1	3.770	12.21	12.21
i2	TYČ PLOCHÁ 20/5	3.220	1	0.785	2.53	2.53
i3	PÁS OCEL - KOTVA 30/5	0.165	10	1.178	0.19	1.94
i4	P5 1362x1217 (s oválnými výstupky)	1.187	1	41.350	49.08	49.08
i6	PŘÍCHYTKA P3 15x25		6	-	0.01	0.06
i7	ČEP		3	-	0.22	0.66
i8	PLECH 50x200x6 (kryt čepu)	0.200	3	2.360	0.47	1.42
i9	L25x25x4	0.100	3	1.480	0.15	0.44
CELKEM kg						68.35

TLOUŠŤKA PROTIKOROZNÍ OCHRANY CELKEM 420 μm

YŠKOVÝ KÝST - B.p.v.
KÓTOVNO V MLNĚTŘEČ

ZPŘACOVNO PRO :





AQUATIS a.s. Botanická 834/56, 602 00 Brno		Tel: +420 541 554 111 Fax: +420 541 211 205	E-mail: info@aquatis.cz http://www.aquatis.cz
Zpracovatel projektant ING. MICHAL NOVOTNÝ	Hlavní inženýr projektu ING. MICHAL NOVOTNÝ	Vedoucí gředisko ING. OLDŘICH NEUMAYER, CSc.	
Vypracoval ING. ZDENKO ŽALUBIL	Kontrolor ING. OLDŘICH NEUMAYER, CSc.	Zakázkové číslo 022101A	
Datum ZÁŘÍ, 2024	Stupeň dokumentace PD JEDNOSTUPNÁ	Název souboru D_113.dwg	

PK ROZTOKY - REKONSTRUKCE

D. DOKUMENTACE STAVEBNÍCH OBJEKTŮ A PROVOZNÍCH SOUBORŮ

D.1. SO 01 - REKONSTRUKCE PLAT PRAVEBNÍ KOMORY

Příloha

POKLAP HORNÍHO ZÁVĚSU VRÁTNĚ

Mřížka 1:10, 1:2	Číslo přílohy D.113.
----------------------------	--------------------------------

Objednatel
POVODÍ VLTAVY, STÁTNÍ PODNIK